

KLIKLOK™ ECT500/625 Carton Former



BOSCH
Invented for life

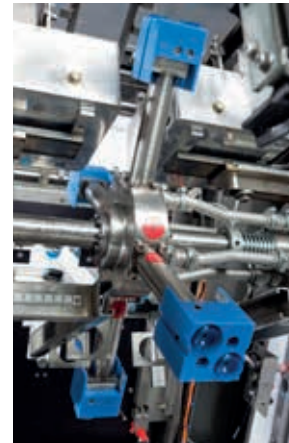


Kliklok International's ECT 625 and 500 model carton formers are hot-melt, adhesive-style top load carton forming machines. The ECT delivers exceptional efficiencies, with a state-of-the-art indexing turret concept for remarkable carton control and some of the highest forming speeds available.

The ECT is capable of handling an impressive array of carton tray designs, formed from a single flat blank, from typical four-corner styles to complex hexagonal, octagonal and other multi-sided packages. Adhesive application can be accomplished through the use of either an enclosed, pressurised nozzle-type applicator system, or an open-pot 'dauber' style approach.

Positive Carton Control

The ECT is well-suited to deliver a high degree of carton control. Following the feed stroke, the carton remains fixed to the forming mandrel throughout the entire forming process. This superior carton control means a reliable final package presentation, as well as the ability to handle aged or warped carton stock.



Four-Station Rotary Turret Design

This innovative technology provides for short, controlled movements and smooth mechanical action at high speeds.

Reciprocating Forming Cavity

The reciprocating motion of forming and compression on the ECT provides for exceptional carton sealing characteristics. This in turn provides for a more positive strip-off action of formed cartons from the mandrel.

Double Head Configuration

The ECT can be made with a double forming head (or 'duplex'), accomplished by using a wider overall machine frame and second turret assembly, so doubling machine forming speed capacity.



Interactive colour touch screen

A standard feature on the ECT500 & ECT625, the Insight® colour touch screen is simple to learn and operate, using icon-based intuitive controls. It offers superior troubleshooting capability, advanced diagnostics with shift performance data & optional digital manuals.

Operational Safety

ECT formers are designed with a comprehensive arrangement of fully interlocking panels and doors, meeting or exceeding most worldwide regulatory safety codes and practices. All mechanical and electrical components and assemblies are further protected through the use of overload devices, ensuring that the ECT machine will operate under the safest of conditions.

Machine Integration

ECT equipment can be designed to operate independently, or can be easily modified to operate in conjunction with other packaging line components, in a totally integrated packaging system.

**Pioneering
Engineering**

KLIKLOK™ ECT500/625 Carton Former

Performance

Speed:

ECT 625: 75 Cartons/Minute (Single Head)
 ECT 500: 80 Cartons/Minute (Single Head)
 ECT 500 Duplex: 160 Cartons/Minute (Double Head)
 Actual speed depends on carton size and style.

Carton Specifications

ECT 625

| | X | Y | L | W | W(T) | D |
|------|---------|---------|--------|---------|--------|--------|
| MIN | 5.875" | 4.75" | 4.937" | 2.75" | 2.75" | 1.0" |
| (mm) | 150 | 120 | 100 | 70 | 70 | 25 |
| MAX | 19.687" | 24.625" | 17.75" | 10.812" | 14.75" | 4.937" |
| (mm) | 500 | 625 | 450 | 275 | 375 | 125 |

ECT 500

| | X | Y | L | W | W(T) | D |
|------|---------|---------|--------|--------|---------|--------|
| MIN | 5.875" | 4.75" | 4.937" | 2.75" | 2.75" | 1.0" |
| (mm) | 150 | 120 | 100 | 70 | 70 | 25 |
| MAX | 19.687" | 19.687" | 17.75" | 8.312" | 11.812" | 3.937" |
| (mm) | 500 | 500 | 450 | 212 | 300 | 100 |

Note: A carton combining multiple maximum and/or minimum dimensions may not be compatible with the standard system

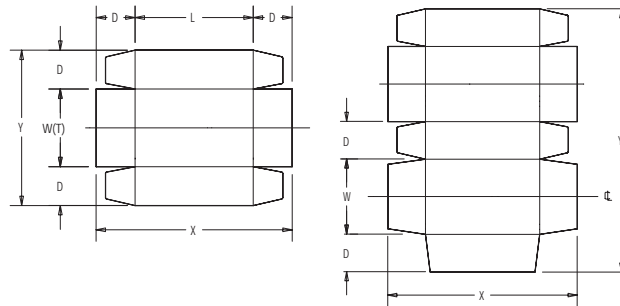
Operating Requirements

ELECTRICAL:

400V 3 Phase 50HZ plus neutral & earth
 Electrical system conforms to HSWA/IEC 201 (EN60204-1)

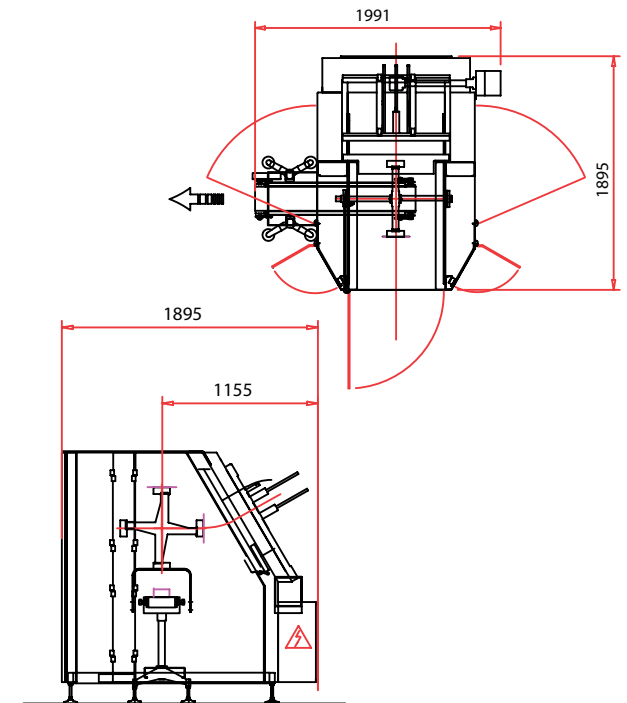
POWER: 6.5kW

AIR CONSUPTION: 85 L/min (3 SCFM) @ 5.5 bar (80psi)
 for adhesive system



Standard Features

- ECT625 - Nordson hot-melt glue jetting application system
- ECT500 - Hot melt glue application using mechanical daubers
- High-speed four-station rotary turret
- Fully automatic operation
- Compact construction
- Rear-mounted operator panel
- Electrical overload protection for main drive motor
- Fully enclosed barrier guarding with interlocked doors
- Timed stop control
- Discharge directly to conveyor
- Simple size change using change parts
- Static hopper



Optional Features

- Option on ECT500 - Nordson hot melt glue-jetting system
- Choice of outfeed conveyor
- Powered hopper
- Handwheel adjustable hopper

KLIKLOK™

Western Drive, Hengrove Park Estate, Bristol BS14 OAY England
 Tel +44-1275-836131 Fax +44-1275-891754
 sales@kliklok-int.com

www.kliklok-int.com